

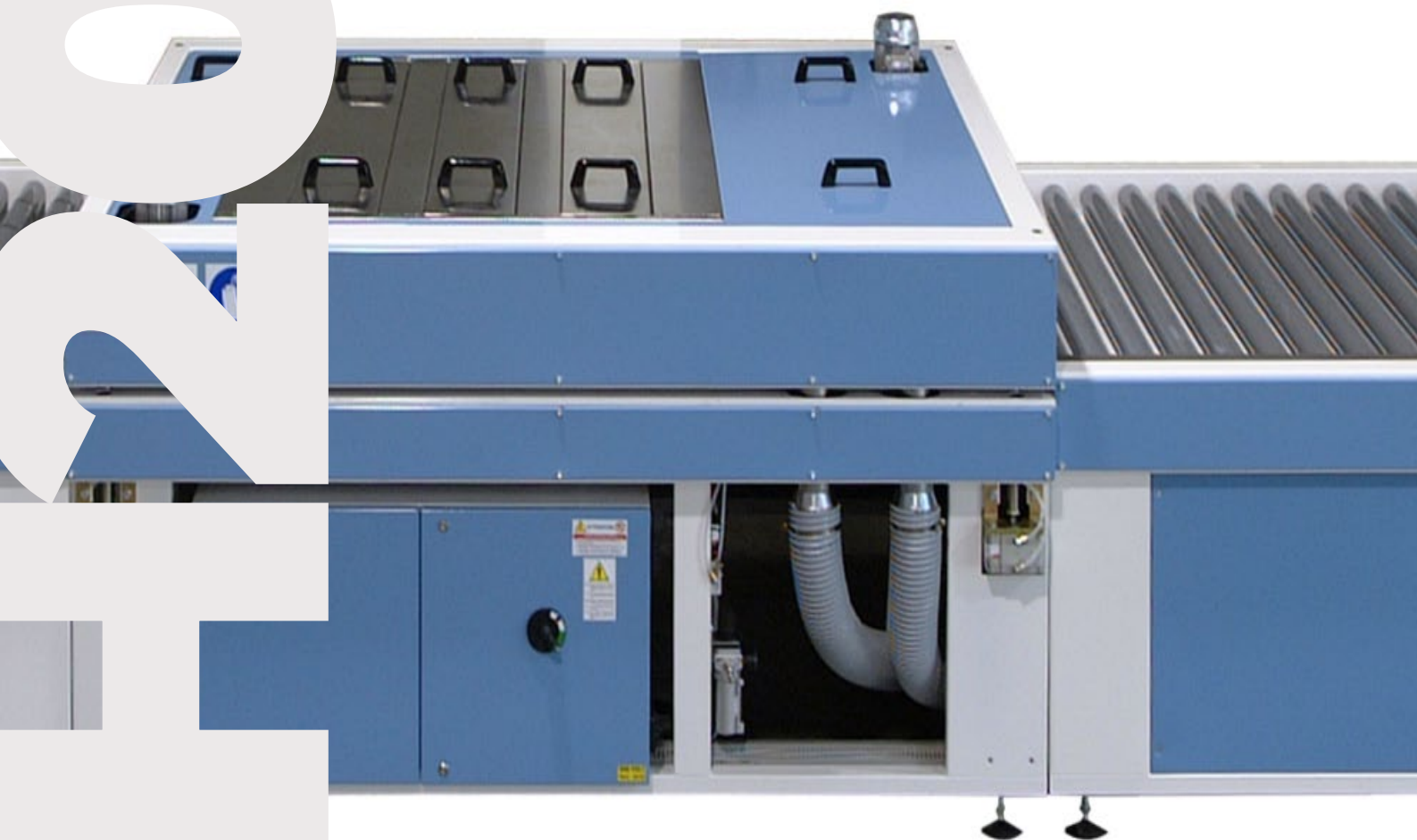
**STANDARD**

# MH2000

HORIZONTAL  
WASHING MACHINE  
2000 / 6 BRUSHES

**EMAR**  
— GLASS —

0002EF2



# MH2000



## Mod. **MH2000** HORIZONTAL WASHING MACHINE STANDARD 2000 / 6 BRUSHES

- The washing machine is made up of an input and output module of 1.5 m. The transport of the glass occurs via a system of anti-cut rollers connected to each other by stainless steel chains and self-adjusting brass supports.
- The body of the washing machine is made of powder-coated stainless steel.
- All components in contact with water are resistant to corrosion.
- The machine is equipped with 6 brushes with stainless steel shafts and aluminum supports.
- The water management unit consists of 1 washing area with tank, pump, filters and internal parts in stainless steel.
- Thanks to the shape of the tank, water consumption has been reduced to a minimum reusing wastewater from one sector to another.

# MH2000

- *Possibility of connecting the last rinse area directly to the demineralizer.*
- *The thermostat-controlled heating system is standard over the entire range.*
- *Drying is done by a fan mounted in an insulated box to reduce noise, connected to a distributor designed not to vary the air flow to the 4 blowers of the machine*
- *The working speed is adjustable and controlled exclusively by electronic systems to keep the torque constant even with different glass sizes.*
- *The height of the work surface is adjustable from 900 mm (+/- 60 mm).*
- *The machine, as standard, has been designed to be connected to other work modules.*

# MH2000

## ***ALWAYS CONNECTED***

---

All automatic lines have the possibility of being connected to our monitoring center simply by connecting the line to the internet, with the following advantages:

- Possibility of remote troubleshooting
- Reduction of machine downtime
- Instant control of the aging of electronic components
- Possibility of excluding sensors to continue production while waiting for a replacement (provided it does not compromise the operator's safety)



# MH2000

## TECNICAL SPECIFICATIONS

Power supply	400 Vac 3-phase + Neutral 50 Hz
Total consumption	20 kW 400 Vac 50 Hz
Fan motor	2 x 9 Kw 400 Vac 3-phase 50 Hz
Washing zone	1 with recycling pump and filter
Rinsing zones	1 with demineralizer connection
Washing brushes	6 brushes of 140 mm
Drying area blowers	2 above and 2 below
Minimum washable glass	200 x 200 mm
Washable thickness	From 3 to 12 mm (self-adjustable)
Working speed	From 2 to 5 m/minute
Height	1.360 mm
Lunghezza	6.200 mm
Width	2.500 mm
Weight	2.500 Kg

We recommend that water supplied to the washing machine has the following characteristics

Conductivity	= less than 10 uS (microSiemens)
Hardness total	= less than 5°f (French degrees)
Salt content	= less than 5 mg/L
Chloride	= less than 5 mg/L
Iron	= less than 0.05 ppm
Turbidity	= less than 0.5 FTU

NB. If the water values are higher than those recommended, the glass washing results may be compromised. If necessary, upon request we can provide equipment for cleaning the water.

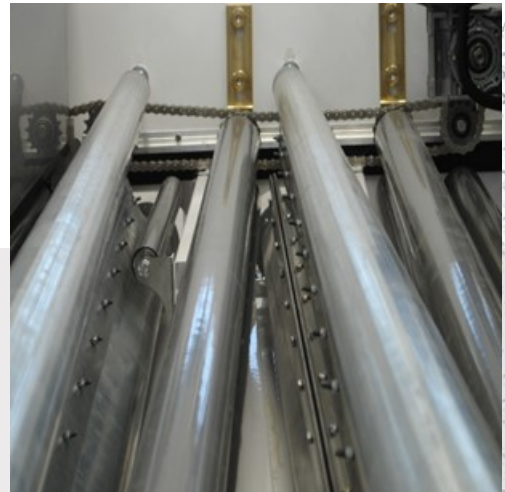


# MH2000



## CONTROLLED TRANSPORTATION

The system adopted allows the glass to always be kept adherent to the moving rollers. All this thanks to an innovative inverter-controlled type of transport.



## EASY MAINTENANCE

Thanks to the type of construction, maintenance and cleaning are convenient, easy and quick.



## NOISE REDUCTION

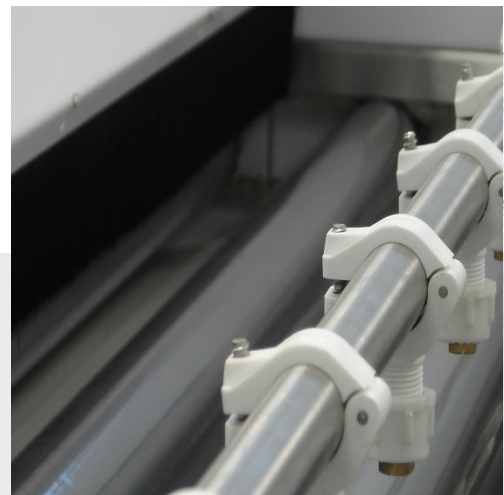
A fan for drying has been mounted in the insulated output module to reduce noise with a distributor to manage the air flow, and therefore obtain perfect drying. The cleanness of the air is guaranteed by a removable filter.

# MH2000



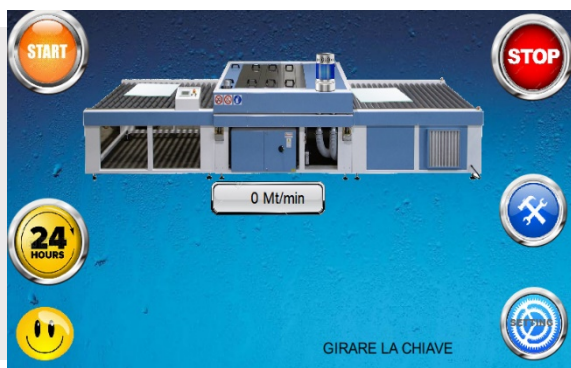
## SELF-ADJUSTING OPENING

The transportation system adapts to the thickness of the glass via supports specially designed to reduce pressure on the glass.



## LONG-LASTING BRUSHES

The washing area is equipped with 6 completely independent brushes. The shape of the bristles and the constant distribution of water guarantee long duration over time.



## TOUCH SCREEN COMMANDS

The EASY TOUCH control panel is simple and intuitive and allows the operator to manage the entire line and control all the parameters of the machine. Thanks to this system the machine can be connected to our headquarters for maintenance and any machine downtime resolutions.



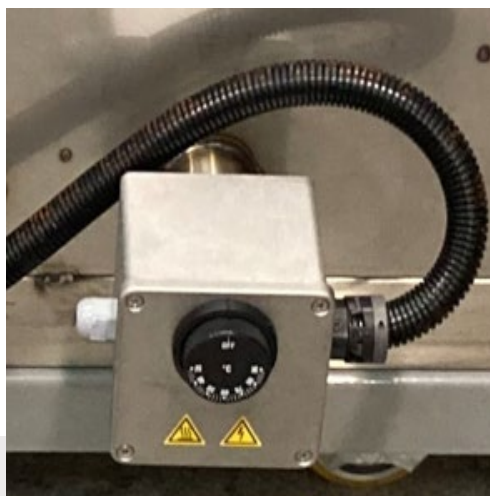
# MH2000

## OPTIONALS



### LOW E BRUSHES

These type of brushes have special bristles that allow you to work with more delicate glass. They are complete components with a stainless-steel shaft



### WATER HEATING

The heating system is composed of a powerful resistance (4.5 kW 400 Vac 3-phase) controlled by an adjustable thermostat.



### MACHINE OPENING 12-24 mm

The machine can process glass up to 24 mm thick thanks to the inclusion of a pneumatic system that manages thicknesses from 2 to 12 mm and from 12 to 24 mm.

# MH2000



## OPENING FOR MAINTENANCE

Thanks to the movement system adopted, it is possible to open the machine up to 350 mm allowing the possibility to carry out maintenance without having to dismantle any components.

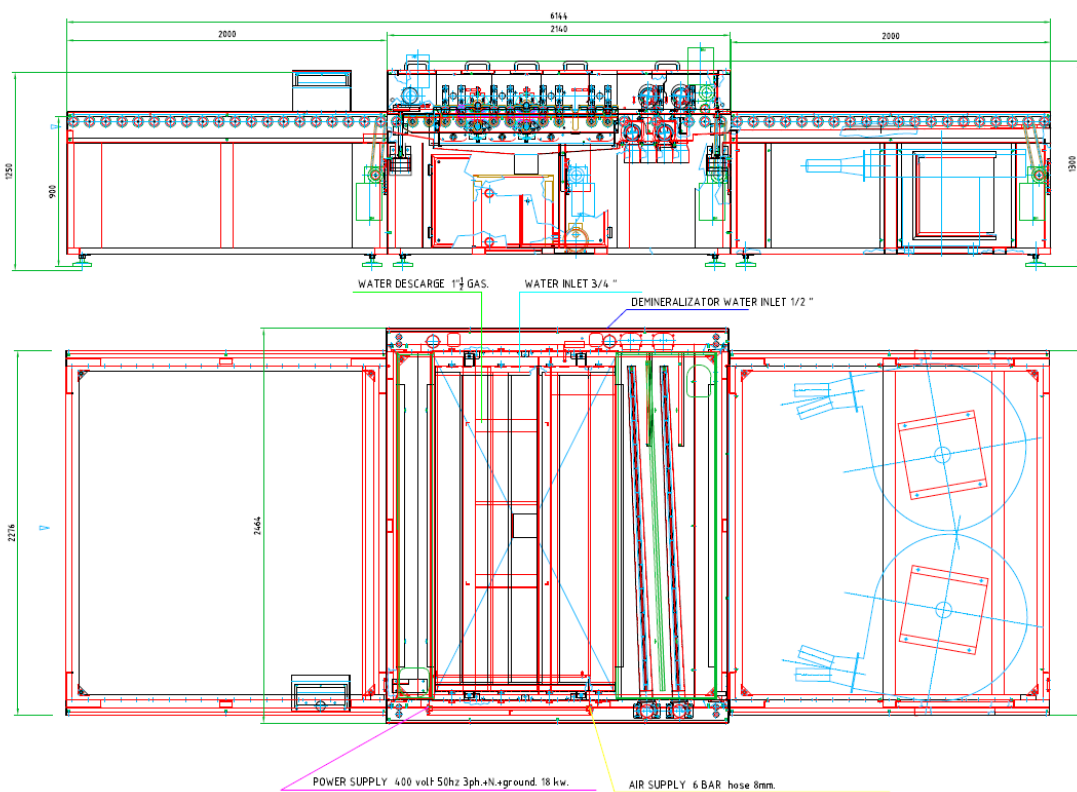


## PRE-WASH

The washing machine is designed for the insertion of a pre-wash module to eliminate grinding residues, before entering the machine.

# MH2000

## LAYOUT





GLASS WORKING EQUIPMENT

[www.emarglass.it](http://www.emarglass.it)

