

A high-contrast, black and white photograph of water splashing, creating numerous droplets and bubbles. The image is partially obscured by a large blue geometric shape that serves as a background for the text.

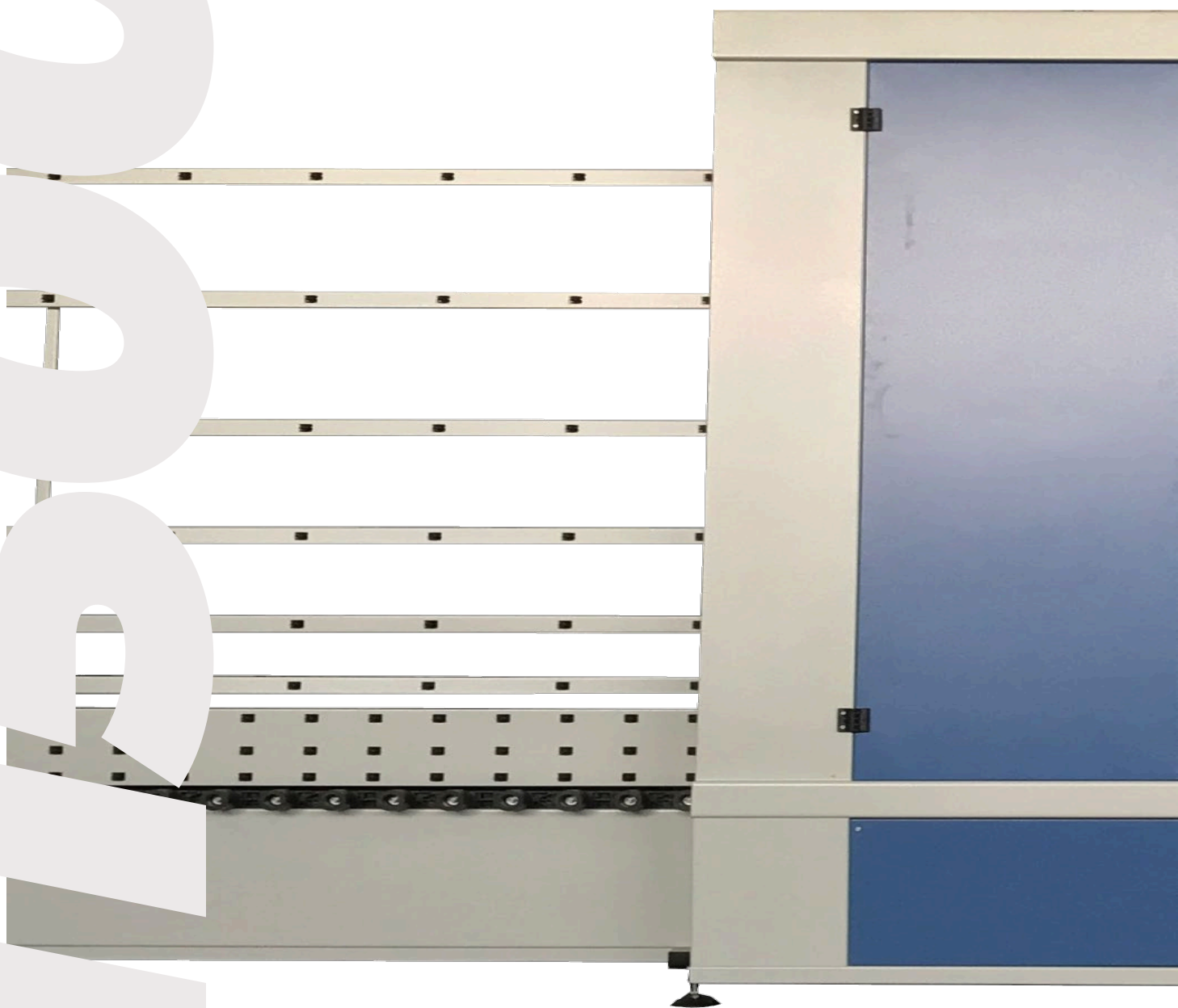
ECO SERIES

M1500E

VERTICAL WASHING MACHINE
FROM 1500 OPEN TOP
4 BRUSHES
MOTORIZED OUTPUT

EMAR
— GLASS —

FREE



M1500E



Mod. **M1500E**

ECONOMIC VERTICAL WASHING MACHINE
FROM 1500 OPEN TOP / 4 BRUSHES / MOTORIZED EXIT

- Machine composed of an inlet with 2.000 mm idle Vulkollan rollers and a 2.000 mm motorized outlet with cut-resistant, accident-proof Vulkollan rollers and lights for inspecting the glass with safety limit switches.
- 1.540 mm machine body with opening on the top side. Powder coated steel structure for greater resistance to corrosion. Washing unit with four 80 mm nylon cylindrical brushes (two front and two rear).
- Two stainless steel water recycling tanks with two pumps.
- Rinsing unit with possibility of connection to the demineralizer.
- Thermal protection of motors and low voltage control circuit.
- Two-blower drying system with high-pressure fan.
- All controls in contact with the operator are in low safety voltage.
- Protection against access to dangerous parts of the machine according to European regulations.

M1500E

TECNICAL SPECIFICATIONS

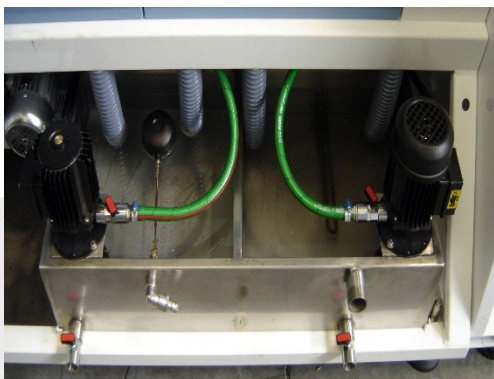
Power supply	400 Vac 3-phase + Neutral 50 Hz
Power consumption	7 kW 400 Vac 50 Hz
Fan motor	4 kW 400 Vac 3-phase 50 Hz
Hot water resistance	1.5 Kw 400 Vac 3-phase 50 Hz
Washing brushes	4 standard (optional LOW-E)
Washing areas	2 separate zones with ECO WATER SYSTEM
Washable glass measurements	Min. 300 x 250 h mm circa Max 2000 x 1500 h (TOP OPENING)
Washable thickness	Da 3 a 14 mm (optional fino a 20mm)
Work direction	From left to right (optional right to left)
Work speed	4 m/min
Work surface	550 mm approx
Height	2.200 mm approx
Length	5.540 mm approx
Width	1000 mm approx
Weight	850 kg approx

We recommend that water supplied to the washing machine has the following characteristics:

Conductivity	= less than 10 uS (microSiemens)
Total hardness	= less than 5° f (French degrees)
Salt content	= less than 5 mg/L
Chlorides	= less than 5 mg/L
Iron	= less than 0,05 ppm
Turbidity	= less than 0,5 ftu

NB. If the water values are higher than those recommended, the glass washing results may be compromised. Upon request we can provide equipment for cleaning the water.

M1500E



WATER RECOVERY

Water is a precious resource - the washing system is designed for a double reuse of water, avoiding unnecessary waste while maintaining optimal quality at the end of the process.



LONG-LASTING

Attention to durability over time is synonymous with quality - All parts of the machine in contact with water are made of powder-coated stainless steel, brush supports and bows in aluminium, pipes in stainless steel, and brass spray nozzles.

M1500E



SAFE TRANSPORTATION

The safety of the operator is fundamental, but the glass must be moved for processing. The system adopted allows the glass to be blocked at any time with the rollers moving. All this thanks to an innovative type of transportation.

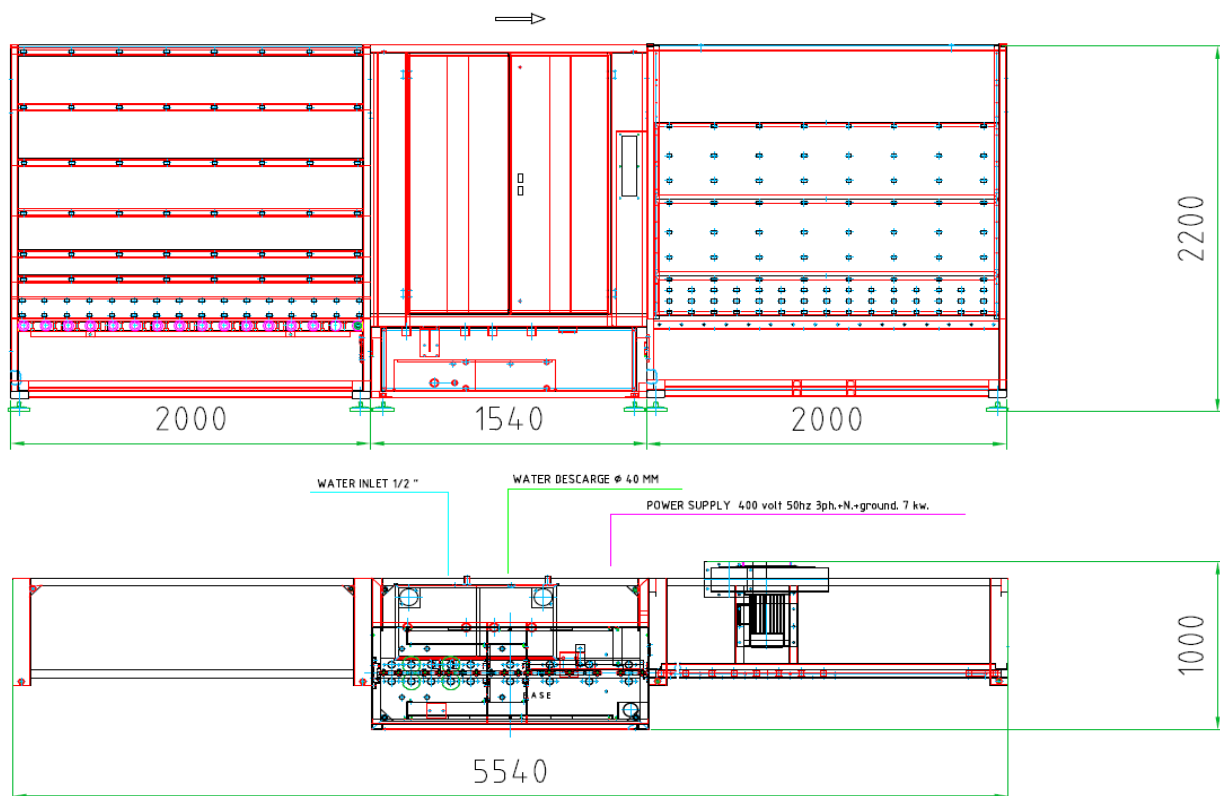


EASY MAINTENANCE

Thanks to the type of construction, maintenance and cleaning are convenient, easy and quick.

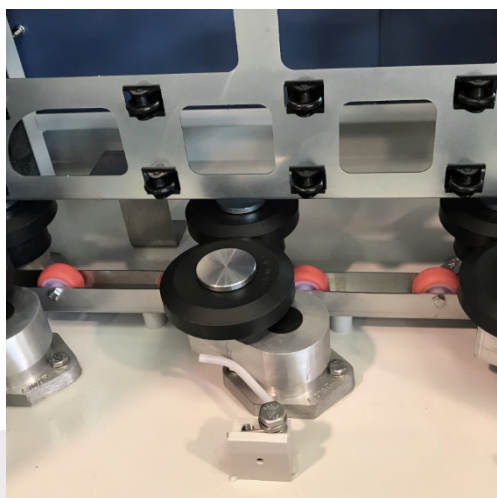
M1500E

LAYOUT



M1500E

OPTIONALS



THICKNESSES UP TO 20 mm

Thanks to the self-aligning opening system it is possible to process glass thicknesses from 3 to 20 mm completely automatically.



FAN BOX

The box for the fan allows a notable reduction in noise and, via a filter, guarantees excellent air quality free of impurities.



MOTORIZED ENTRY

The automation of the entrance guarantees safe movement of the glass in a completely autonomous manner.



LOW E BRUSHES

These type of brushes use special bristles that allow you to work with more delicate glass. They are complete components with a stainless-steel shaft.



GLASS WORKING EQUIPMENT

www.emarglass.it

