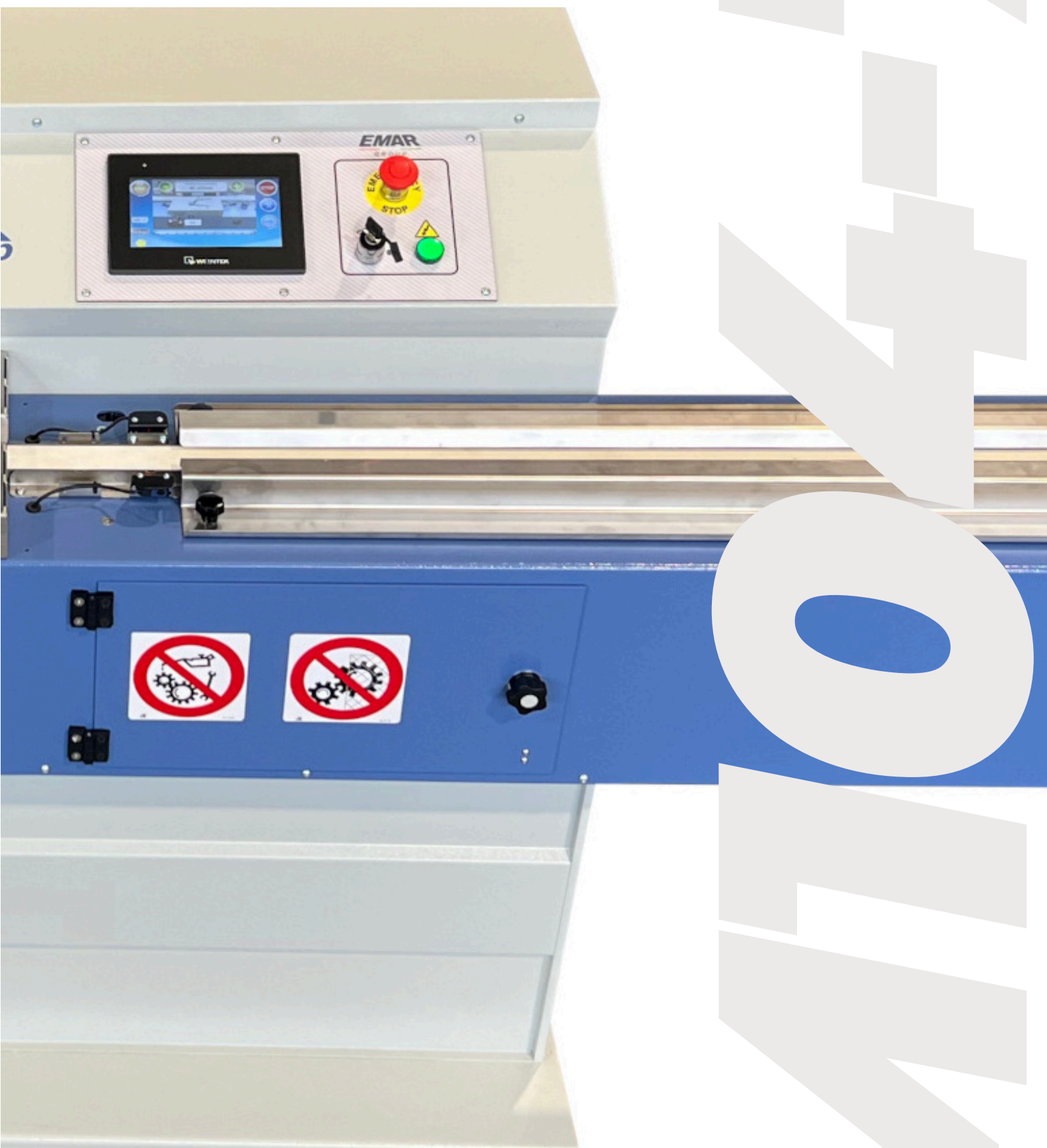


BUTYL EXTRUDER

M104-7

BUTYL
EXTRUDER
7 Kg

EMAR
— GLASS —



M104-7



Mod. **M104-7**
BUTYL EXTRUDERE
OF 7 KG

- Powder coated steel structure for greater resistance to corrosion.
- EASY TOUCH control panel, a simple touchscreen that allows the operator to control the manufacturing process, adjust times and check the functioning of each individual component.
- Heating setting with daily and weekly programming.
- All adjustments are configured and displayed on the panel, working speed, set and actual temperature, head opening measurement.

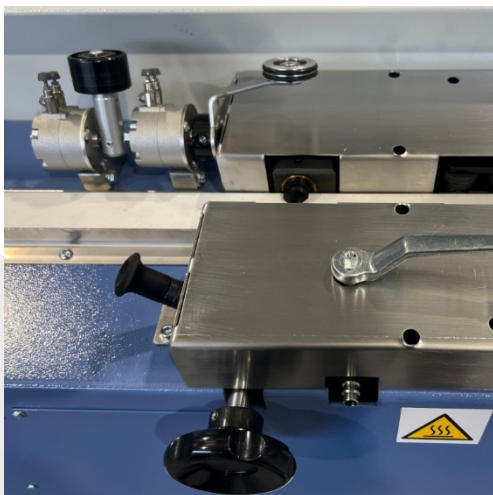
M104-7

TECHNICAL SPECIFICATIONS

Power supply	400 Vac Triphase + Neutral 50 Hz
Total consumption	4.5 Kw 400 Vac. 50 Hz
Pneumatic power supply	7-8 Bar
Refill cartridge diameter	200 mm
Butyl loading capacity	8 Kg
Hydraulic pressure	60-150 Bar
Air consumption	100 liters/hour
Head opening	Manually adjustable from 5-32 mm
Working speed	Adjustable from 15 to 40 meters per minute
Height	1.200 mm
Length	3.000 mm
Depth	800 mm
Weight	670 Kg

- All alarms, status of inputs and outputs, resistors, oil pump motor, belt and status of solenoid valves are displayed on the control and maintenance page.
- Heating failure recognition system.
- Open piston control sensor for cartridge loading.
- Automatic belt tensioning.
- Machine control in stand by to reduce consumption.
- Strip holder and tire profile guide pliers.
- Round pressers with template function.
- Double-stage hydraulic pump to keep the extrusion thrust constant.
- Manual adjustment of the work surface for profiles from 6.5 to 8 mm.
- "always connected" system for remote control with production.

M104-7



EXTRUSION GROUP

Opening of the adjustment heads from 5 to 32 mm
Adjustment of the plane for profiles from 5.5 to 8 mm.



LONG DURATION

The special treatment of the extrusion heads guarantees a longer life over time. Silicone tapes have a special loom. Pneumatic actuators are guaranteed for millions of movements.



EASY TOUCH SYSTEM

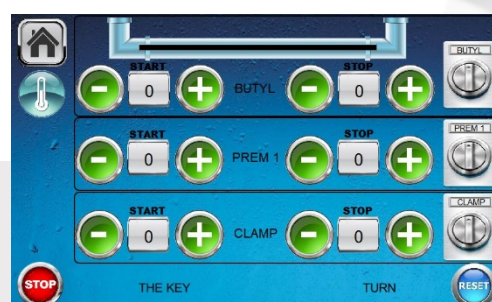
The 7" control panel that allows the operator to control the machining process, adjust times and check the operation of each individual component. The human machine interface has never been so simple.

M104-7



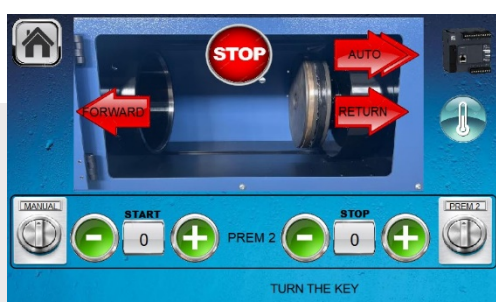
INTUITIVE

The main page is simple and intuitive, just one button is enough to start working, the machine takes care of everything else.



ADJUSTMENTS

The operator has the possibility to adjust or exclude each individual actuator, gripper, extrusion group, strip holder, round presser, temperature and restore the initial factory parameters.



CARTRIDGE CHANGE

The cartridge change and round presser adjustment page for shaped profiles allow the operator to better manage the machine's functionality.



I/O CONTROL

The control of the components is total, from moving the single actuator to reading the status of the individual resistors, from controlling the machine parameters to changing the language, all via a very simple human-machine interface.

M104-7

ALWAYS CONNECTED

The machine has the possibility of always being connected with our monitoring center simply by connecting the line to the internet.

The advantages of this system are enormous:

- Possibility of remote troubleshooting
- Reduction of machine downtime
- Instant control of the aging of electronic components
- Possibility of excluding sensors to be able to continue production while waiting for a replacement (if it does not compromise the operator's safety).





GLASS WORKING EQUIPMENT

www.emarglass.it

